

Contributing Genealogical Data

How to add data to the database

Many of us have done research on our Salzburger family lines going back several generations and possibly to an original Georgia Salzburger Settler. All of the genealogy data on this site has been contributed by those doing research on our Salzburger heritage and these contributions are key to the success of this effort.

Updating a few records (5 or less) can be done by submitting data via an email. However, the preferred method (and required for large amounts of data) is a GEDCOM file containing your family tree. A GEDCOM file is a standard method of exchanging data between family tree programs. Almost all PC desktop genealogy programs can produce that type of file and the program that is used by this system can load it into the database.

Examples of programs that support the GEDCOM standard include Ancestry.com, Rootsmagic and the now unsupported PAF program. As PAF was very popular, an example of creating a GEDCOM from that program is included along with Ancestry and Rootsmagic.

The process is outlined below.

1. Use a file Export process to create a GEDCOM from your system.
2. Email the file to GEDCOM@gasalzburgers.com as an attachment. If the file is very large containing about 20,000 records or more, it may be too large to send by email. Contact us for instructions.
3. Note in the email which ancestor is the oldest Salzburger ancestor. Also identify who is the original Salzburger settler.

Instructions for creating a GEDCOM file for the following programs can be found on the next page. We are here to help with this process and with any other program you might be using.

- Ancestry
- Rootsmagic
- PAF

One other note. Most of our personal family records and trees include many records not directly related to the Georgia Salzburger families. We prefer to load mostly records directly related to our Salzburger Families. Most programs allow you to export a family tree of descendant's and their spouses of one particular person, in this case it would be an original settler or a descendent of an original settler.

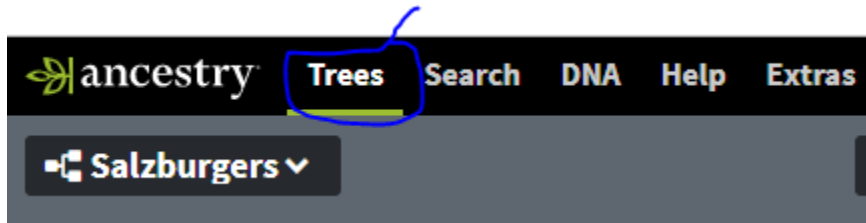
For example, my family tree contains records from Johann George Heidt, from whom I am descended. But I also have records from my wife's family in that tree. So, I do an export of Johann and his spouses and descendant's. That eliminates non-Salzburgers.

But you can send your entire file and we will drop non-Salzburgers for you. We don't want to make this too complicated!

See Next Page for Instructions

Exporting a GEDCOM from Ancestry to your PC

1. Click Trees and "Create & Manage Trees"



2. Select Manage tree next to the tree to be exported

Salzburger Version 3 View tree overview	10/2/2018	Owner Invite family	Manage tree
Salzburgers View tree overview	6/26/2019	Owner Invite family	Manage tree
Salzburgers Color Coded - Version 2 View tree overview	9/6/2018	Owner Invite family	Manage tree

3. Click Download your GEDCOM file

Manage your tree

Export your family tree data, as a GEDCOM file, to your computer.

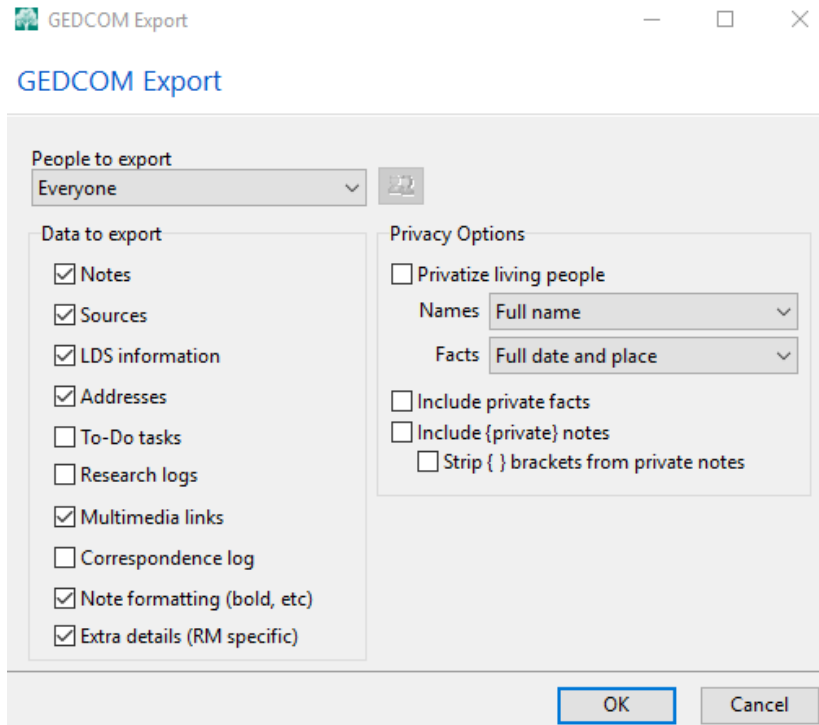


4. You will be asked to save the file on your PC and you are done! Easy

Ancestry does not give you the option of saving only part of your tree. Desktop programs like Rootsmagic can import your GEDCOM and then you will have the ability to select part of the tree for export to another GEDCOM file. Or send us the file from Ancestry and we will be glad to select Salzburgers from that file.

Exporting a GEDCOM from Rootsmagic

1. Select File and then Export
2. Click OK – change default options if necessary



3. Click OK, save with a file name and you are done.

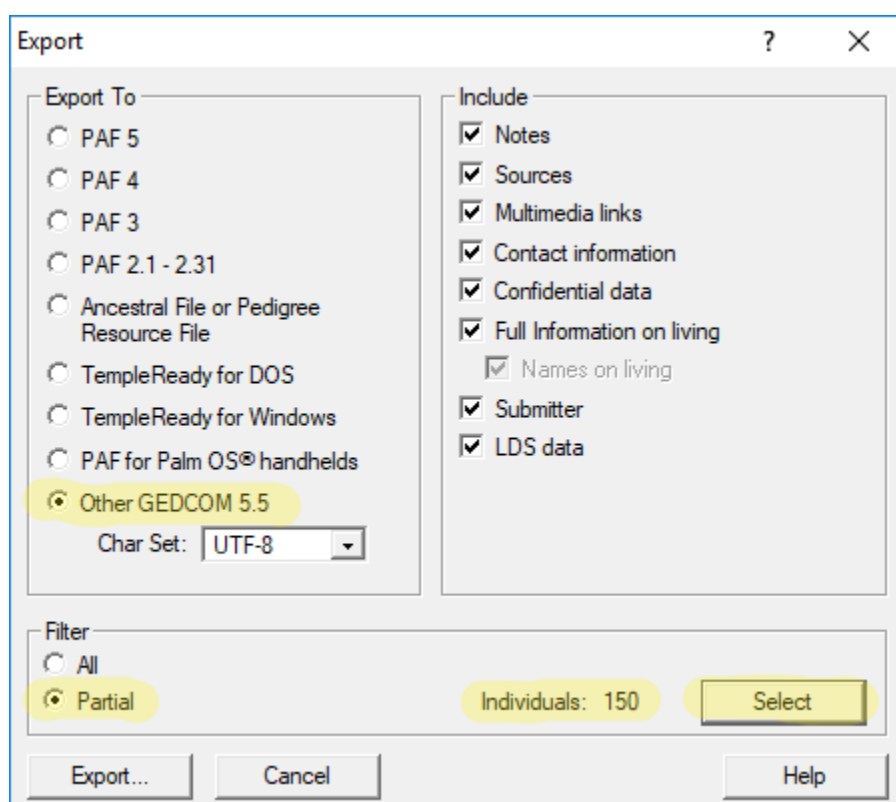
To select descendants of one person in you tree, follow the directions in the link below.

<https://www.familytreemagazine.com/premium/export-rootsmagic-GEDCOM/>

Exporting a GEDCOM from Personal Ancestral File (PAF)

Personal Ancestral File (PAF) was provided by The Church of Latter Day Saints as free genealogy desktop software and was very popular. The final release was in 2013 and is no longer supported. As so many people used it and may still use it, instructions for creating GEDCOMs is included here.

1. Load your genealogy file into PAF as you normally do.
2. Go to File and Export
3. Select "other GEDCOM 5.5", then Partial if you want to export part of your data or All to export the entire database.
4. Use the Select Button to continue. Note that I have 150 individuals in my test file. We will select just descendants of one person in the next step as we are doing a Partial extract.



5. Select Alphabetical, find the person who starts the tree and highlight them. You can enter their name, last then first in the search box. Under Relationship Filter select Descendants, select Clear, then Select under Descendants. That prunes the list to 41 people in my test example.

Find Individual

Sort: Alphabetical RIN

Heidt, John George

» 20 Heidt, Frances Salina	b.1842
» 5 Heidt, Ida Carolyn	b.1914
» 102 Heidt, infant boy	b.1950
» 92 Heidt, James Hamon	b.1972
» 88 Heidt, James Hamon	b.1952
» 9 Heidt, James Hamon	b.1833
» 93 Heidt, Jennifer Denice	b.1970
» 36 Heidt, Jesse C.	b.1839
» 81 Heidt, John George	b.1758
» 78 Heidt, John George	m.1754
» 34 Heidt, John George	b.1771
» 7 Heidt, Margaret Kathleen	b.1919
» 25 Heidt, Maria Pamela	b.1828
» 23 Heidt, Martha Ann	b.1836
» 24 Heidt, Mary Elizabeth	b.1830
» 89 Heidt, Mary Ruth	b.1954

Relationship Filter: Descendants

Select Deselect

Clear Replace <<

Selected: 41

Combine filters using: AND

Field Filter: Define Clear

Matches: 0

Filtered List: Show results only

<< Prev Next >>

Save... Retrieve...

Total: 41

John George Heidt

Sex: M AFN:

ID No:

Birth: 17 Jan 1771 Effingham, Georgia, USA

Chr:

Death: 7 Jan 1848 Effingham, Georgia, USA

Burial:

Baptism:

Endow:

Seal Par:

Father: John George Heidt B:

Mother: Maria Magdalena Schleigh B:

Spouse: Salome Remshart M: 2 Jul 1795

Spouse: M:

OK Cancel Edit Delete... Help

6. On the next screen insure "Include Spouses" is checked and then hit OK

Descendants

Counting John George Heidt as the first generation, how many generations of descendants do you want to select?

Number of generations: 999

Include any spouses of John George Heidt and of his/her descendants?

Include spouses

OK Cancel Help

7. You will return to the screen below, Hit Export and enter a file name and you are done.

Export ? X

<p>Export To</p> <p><input type="radio"/> PAF 5</p> <p><input type="radio"/> PAF 4</p> <p><input type="radio"/> PAF 3</p> <p><input type="radio"/> PAF 2.1 - 2.31</p> <p><input type="radio"/> Ancestral File or Pedigree Resource File</p> <p><input type="radio"/> TempleReady for DOS</p> <p><input type="radio"/> TempleReady for Windows</p> <p><input type="radio"/> PAF for Palm OS® handhelds</p> <p><input checked="" type="radio"/> Other GEDCOM 5.5</p> <p>Char Set: <input type="text" value="UTF-8"/></p>	<p>Include</p> <p><input checked="" type="checkbox"/> Notes</p> <p><input checked="" type="checkbox"/> Sources</p> <p><input checked="" type="checkbox"/> Multimedia links</p> <p><input checked="" type="checkbox"/> Contact information</p> <p><input checked="" type="checkbox"/> Confidential data</p> <p><input checked="" type="checkbox"/> Full Information on living</p> <p><input checked="" type="checkbox"/> Names on living</p> <p><input checked="" type="checkbox"/> Submitter</p> <p><input checked="" type="checkbox"/> LDS data</p>
---	---

Filter

All

Partial

Individuals: 41